

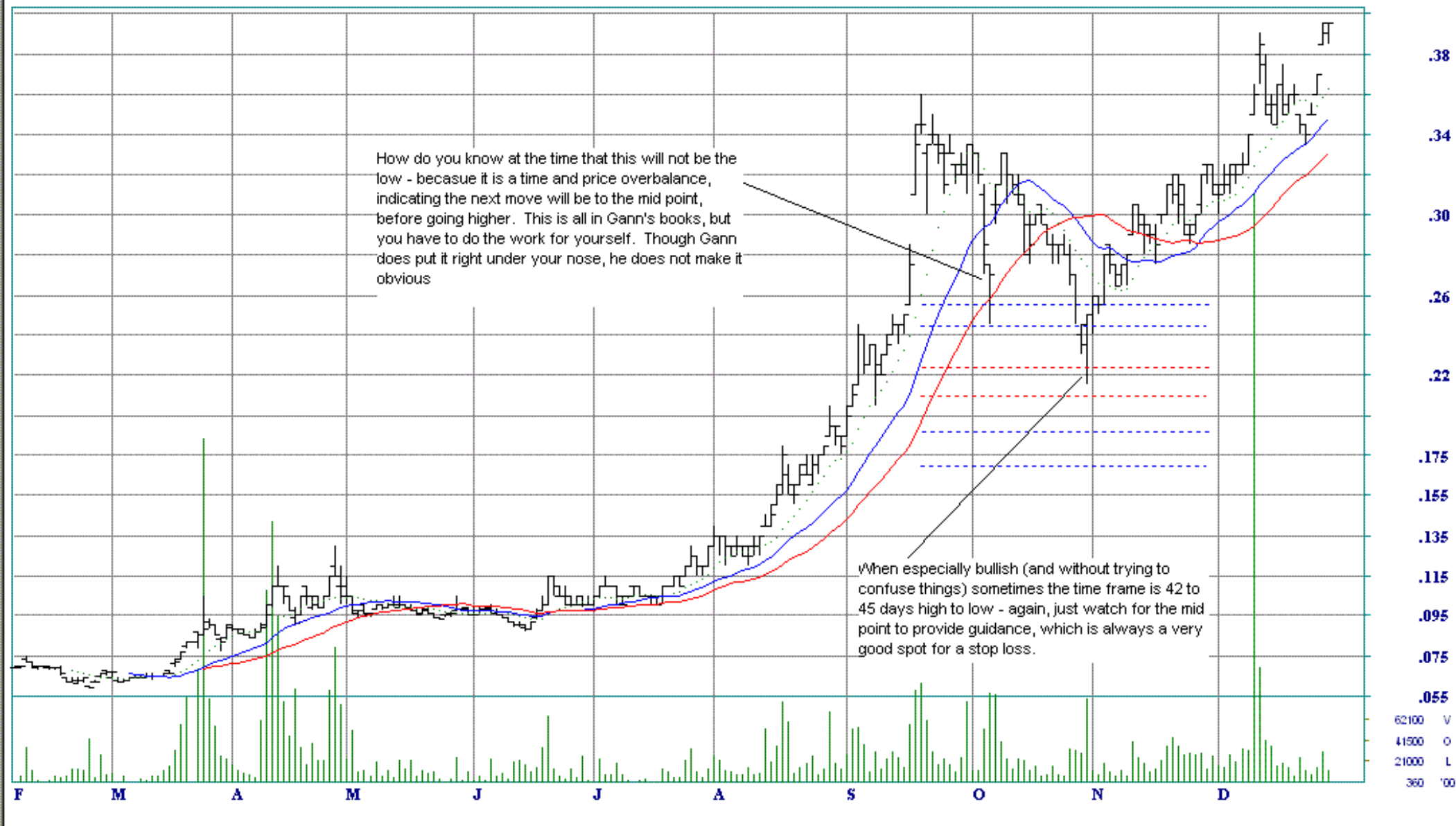
SBM St Barbara Mines

Last date processed 30-12-05

Closing Price : .39 (.385)

SBM

DAILY - ARITHMETIC - Gold Producer



| FIBONACCI | Start | End | Rise | 38% | 50%  | 62%  |
|-----------|-------|-----|------|-----|------|------|
|           | .087  | .35 | .263 | .25 | .219 | .187 |

Gold stocks that have been around a long time, like sbm, had very good years in 1993/4 - 15 years (180 months) to 2009 you should note.